

NEW RULEBOOK AVAILABLE NOW

A number of amendments to rules have necessitated in a reissue of the rulebook. The latest edition that competitors and officials should be utilising is the December 2019 version. A brief summary of the changes are as follows: -



Licence Fees

The licence fee structure has changed to reflect the reduction in Officials licences to \$25

Speedway Sedans Australia Field Sizes

Maximum field sizes for SSA events have increased, from 12 cars to 16

Speedway Sedans Australia Protest Rules

SSA has its own separate protest rules in place relating to chassis and engine, which have been clarified in Appendix 3A in this latest edition

Speedway Sedans Australia Social Media Policy

An updated version of the Social Media policy applicable to all Speedway Sedans Australia Competition

One-Way Communication

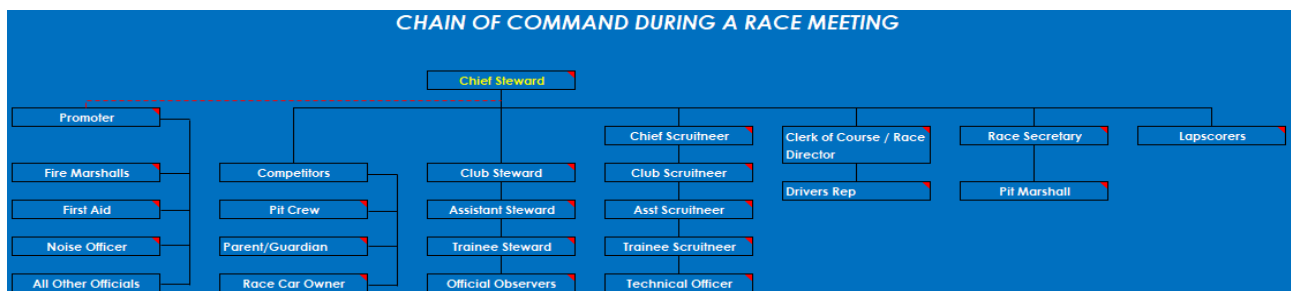
An amendment to the penalty matrix for one-way communication, with drivers now receiving a rear of field penalty for non-compliance, as opposed to the previous black flag penalty.

The new rulebook can be downloaded here: - [December 2019 Rulebook](#)

WHO IS IN CHARGE?

At every Speedway Australia event, a team of Officials will work together in defined roles, culminating in the smooth and efficient operation of a race meeting.

However, given the nature of our sport there will be occasions where situations arise which may compromise the smooth operation of an event – be that anything from a dispute involving a competitor, to an accident or hazard which might affect the safety of participants.



Speedway Australia Rules and Regulations outline a Chain of Command (see above) with the Chief Steward at the head, whereby instructions flow downward, while accountability flows upward. Appointed by the division, the Chief Steward is the sole authority for the interpretation and enforcement of these rules and regulations. All other Stewards and Officials are responsible and answerable to the Chief Steward, who has the power to direct or instruct these Officials in the conduct of their duties.

It is vital that Officials do not over-step their boundaries in relation to what their role entails. Further information regarding the responsibilities of each role can be following [this link to the Chain of Command Diagram](#) by clicking the individual roles.

VINTAGE SURVEY REMINDER



A fortnight ago we launched a survey aimed toward venue operators to gauge opinions on how the vintage movement may grow and prosper into the future. In particular, we are seeking feedback on how these vintage demonstrations are conducted and what improvements can be made, if any.

Australia works in partnership with the Australian Vintage and Classic Speedway National Body to ensure the demonstrations that take place are conducted in accordance with the relevant guidelines, protecting both the

vintage participants and the rest of the sport.

This survey has seen some constructive feedback to date, however there are still venues that frequently operate vintage meetings who are yet to participate in the discussion. If you haven't yet completed the survey, you may do so by [clicking here](#).

FIRE SAFETY CHECKLIST



Speedway Australia sets a minimum standard for all venues to ensure the quick response to any on track scenario that may result in fire. Recent examples of venues not complying with these standards have witnessed slow response times, often exposing competitors to unnecessary risk should a fire engulf their vehicle.

To assist venues in keeping up to date with these standards, we have created a Fire Safety Checklist (see over page) which may be printed and laminated, to be ticked off prior to

the commencement of events. Take note, these fire safety standards are the *minimum* requirements for race meetings & practices and must always be adhered to.

3.6 – Minimum Fire Safety Standards

Manned Quick Response Vehicle

1 x quick response vehicle manned with 2 fire marshals & parked on the infield with the following:

- 6 x ABE 9kg Powder Fire Extinguishers • 4 x ATC Foam/Cold Fire (or equivalent) 9 Litre extinguisher
- 1 x 9 Litre Water Fire Extinguisher • 1 x Jaws of Life Combination Tool (if possible)

Infield Fire Marshals

2 x fire marshals at either end of the infield with:

- 1 x ABE Powder Fire Extinguisher • 1 x ATC Foam/Cold Fire (or equivalent) 9 Litre extinguisher

Pit Fire Marshal

1 x fire marshal in the pits (manning the pit return road) with:

- 1 x ABE Powder Fire Extinguisher • 1 x ATC Foam/Cold Fire (or equivalent) 9 Litre extinguisher

SPEEDWAY AUSTRALIA CONTACTS

Please see below for the relevant contacts for all your Speedway Australia requirements.

Office

Tim Savell
James Hadley
Liz Weaver
Adam Brook
Ross Kirby
Kirsten Knox
Robin Pearce
Angela Warren

General Enquiries

General Manager
Youth Development Officer
Track & Safety Dev. Officer
Sport Development Officer
Sport Development Officer
Licensing & Operations Admin.
Accounts
Office Administrator

08 8139 0777

0424 923 494
08 8139 0706
08 8139 0705
0429 333 528
0436 375 938
08 8139 0703
08 8139 0704
08 8139 0701

admin@speedwayaustralia.net.au

tim@speedwayaustralia.net.au
james@speedwayaustralia.net.au
liz@speedwayaustralia.net.au
adam@speedwayaustralia.net.au
ross@speedwayaustralia.net.au
kirsten@speedwayaustralia.net.au
accounts@speedwayaustralia.net.au
angela@speedwayaustralia.net.au



This handy reference guide is to be used to check fire safety requirements are met prior to the commencement of events.

The following fire safety standards are the minimum requirements for speedway venues at race meetings & practices and must always be adhered to.

| | | |
|-------------|-------|----------|
| Track Name: | Date: | Steward: |
|-------------|-------|----------|

| FIRE SAFETY | General Observations / Other Notes |
|---|------------------------------------|
| <u>Manned Quick Response Vehicle</u> | |
| 2 Fire Marshals with vehicle | Yes/No |
| 6 x ABE 9kg Powder Extinguishers | Yes/No |
| 4 x ATC Foam/Cold Fire 9lt | Yes/No |
| 1 x 9lt Water | Yes/No |
| Have all extinguishers been tested? | Yes/No |



ABE 9kg Powder



ATC Foam 9kg / Cold Fire 9kg



Water 9kg



| | |
|--|--------|
| <u>Fire marshal either end of infield</u> | Yes/No |
| 1 x ABE Powder Fire extinguisher | Yes/No |
| 1 x ATC Foam/Cold Fire extinguisher | Yes/No |
| Have all extinguishers been tested? | Yes/No |
| <u>Pit Fire Marshal (manning pit return road)</u> | |
| 1 x ABE Powder Fire extinguisher | Yes/No |
| 1 x ATC Foam/Cold Fire extinguisher | Yes/No |
| Have all extinguishers been tested? | Yes/No |
| Fire marshals in protective clothing? | Yes/No |
| Any other observations? | |